

Household Water
Your Local Water Carrier

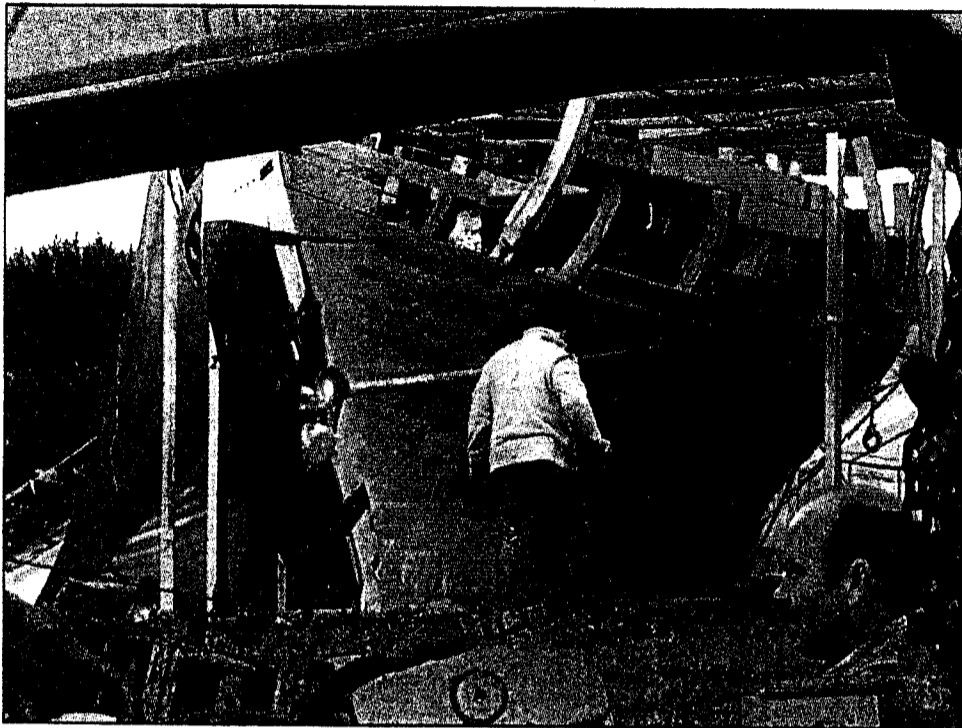
PHONE: ROBIN OR ROSE
536-6508
MOBILE 025-936 754



**COAST
TIMES**

FRIDAY July 13 2001, issue 441. Published weekly to 5300 homes. Ph 536-5715 or 021-536-571, fax lands, Maraetai, Whitford, Chapel Heights, Flat Bush, Alfriston, Brookby, Ardmore, Clevedon, Hunua, Paparimu,

Race against time for historic yacht



The partially restored Lipton Karin III is framed by the mobile crane hauling it into place prior to being trucked from Ness Valley to the Auckland docks.

In 1898 the Karin III was a spectator boat, built by Sir Thomas Lipton, for the America's Cup.

Now it's in a race of a different kind - against time.

A team of carpenters and labourers have been working round the clock in the Ness Valley, Clevedon, to get the boat ready for its return to England.

The boat left on Sunday in

a boat cradle on board the P & O Berlin Express.

The Lipton Karin III will be one of seven New Zealand boats taking part in the America's Cup 150th jubilee regatta at Cowes. It must be in Southampton by August 18 to make the official race registration.

Here the boat is pictured being dragged by crane across a muddy bank to the roadside on a specially made cradle.

From there, the cradle

was replaced with a new one, the yacht trucked to Clevedon for final fittings, and then on to Auckland.

The Lipton Karin III is owned by a syndicate of businessmen who salvaged it from the bottom of Whitianga Harbour last year. Not surprisingly, the restoration project is being sponsored by Lipton Tea.

The yacht was built in Norway by Colin Archer and is a Norwegian double ender design.

Council p to do abo

The council continues to agonise about the uncompleted Te Puru tional complex.

Manukau City Council has \$615,000 pencilled into its budget to complete the project.

This is cash in lieu of reserve funding and wouldn't, therefore, be a direct cost to ratepayers.

But at an annual plan meeting last month, a decision on whether to commit the funding was deferred another month pending a report on the whole issue of council-funded projects.

That report was presented at the council's corporate business committee meeting Monday this week but remained confidential.

Recommendations from that meeting were to be presented to the community development committee as we went to print.

Councillors are worried that baling out Te Puru will create a precedent that would see it having to also come up with rescue packages for

other spons
in the

Ph
M
Sup
Bea
PO

V

W

Mc
Nort
fax 2

◆ 1
re
◆ 20
jo
◆ 3
(3
> 10
(4.8

**ECONOMY
ELECTRICAL**

Phone fax
536-6840 or
025 754 854

* All Electrical
Installations
* Repairs &



Whitford tree enthusiast Bev McConnell is delighted with the response to her "adopt a tree" campaign.

Bev, the owner of A gardens in Whitford's Rd, sent out a leaflet to a hundred homes in Pot Clifton Roads.

The leaflet invited residents to adopt a tree so a new of greenery can be planted from the main Whitford

spaced liquidambar trees will create a distinctive feature at the rather barren entrance to the peninsula, providing

tion to adopt a tree to cover the costs of compost, stakes and permanent labels - so the trees can be identified in the

Folder : _____

Document No : 8